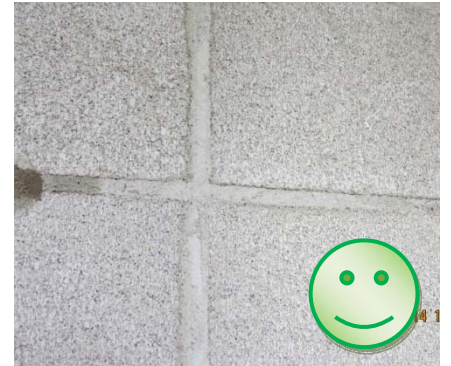


When a liquid air/vapor barrier (AVB) membrane is specified on CMU, there are a few items to review with the mason in order to achieve a surface ready for AVB installation:



Discuss the masonry joints...They need to be full, properly tooled (compressed in the joint, either flush or concave)...We do not want the joints to have voids or mortar sticking out of the joint, creating ledges and improper membrane thicknesses at these irregular shapes, potentially creating failure in the AVB system.



Talk about the wall ties and the need to have them straight and level...if the wall ties are bent, during the unbending, the AVB membrane will tear and will create a breach in the membrane system, potentially creating failure in the AVB system.

Discuss the CMU installation...Make sure that the CMU block has the correct face at the exposed exterior corners. Having the notch in the CMU will not allow for the proper installation of the AVB membrane, potentially creating failure in the AVB system.



Typically these items are discussed in the pre-installation meeting, however, having this discussion with the Foreman and Tradesman on site will help reinforce the importance of these installation concerns and provide for a more reliable AVB membrane installation for many years.